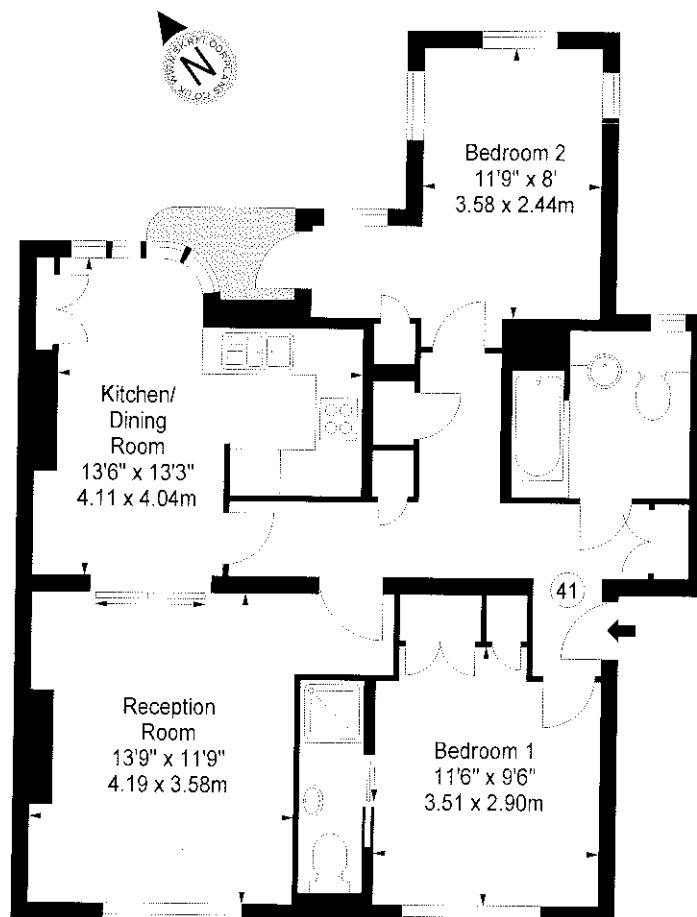


**Flat 41,
Kew Bridge Court, W4**

Approx. Gross Internal Area *
795 Ft² - 73.86 M²



Third Floor

Illustration For Identification Purposes Only. Not to Scale

*** As Defined by RICS - Code of Measuring Practice**

BKR
FLOORPLANS

(OFFICES THROUGHOUT THE UK)

T: 0845 267 2023
WWW.BKRFLOORPLANS.CO.UK
2007